

# ...To Ontolex

Kristina KOCIJAN  
Khadija AIT ELFQIH  
Zaida BARTOLOME

**Tutor: Max IONOV**

**4th Summer Datathon on LLOD  
(SD-LLOD-22)**

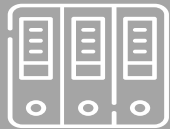
# Lexicographical data for a prototype of a bilingual French-Spanish dictionary for the field of architecture



## 203 entries

101 French entries  
102 Spanish entries

- Entries extracted from two corpora created from internet texts
- Entries validated by a group of experts
- Belonging to modern and contemporary architecture
- Accompanied by their translation, definitions and contexts
- Linked between them and to other external resources



## XML File

TEI-LMF Format

**Objective**



**XML entries  
TEI-LMF Model**



**RDF  
Ontolex Model**



**Step.1**

**XML file  
TEI-LMF model**



**Trial Open refine**

Extensions: RDF ▾ Wikidata ▾

« first ‹ previous 1 of 1 page next › last »

All	entry - xml:id	entry - xml:lang	entry - xr - type	entry - xr - xml:lang	entry - xr - ref	entry - xr - ref - type	entry - xr - ref - target	entry - xr - cit - type	entry - xr - cit - quote - source	entry - xr - cit - quote - text
1.	cerramiento-n	es	synonym	es	partición			goodExampleCorpus	#Architecture_ESCorpus	Para c uniforr
										permi entenc conjun cada fi
										conser cubier cerram partici
			synonym	es	tabique	entry	tabique-n			



## Steps.2

**XML file**  
**TEI-LMF model**



**RDF file**  
**Ontolex model**

- Definition of entry diagram

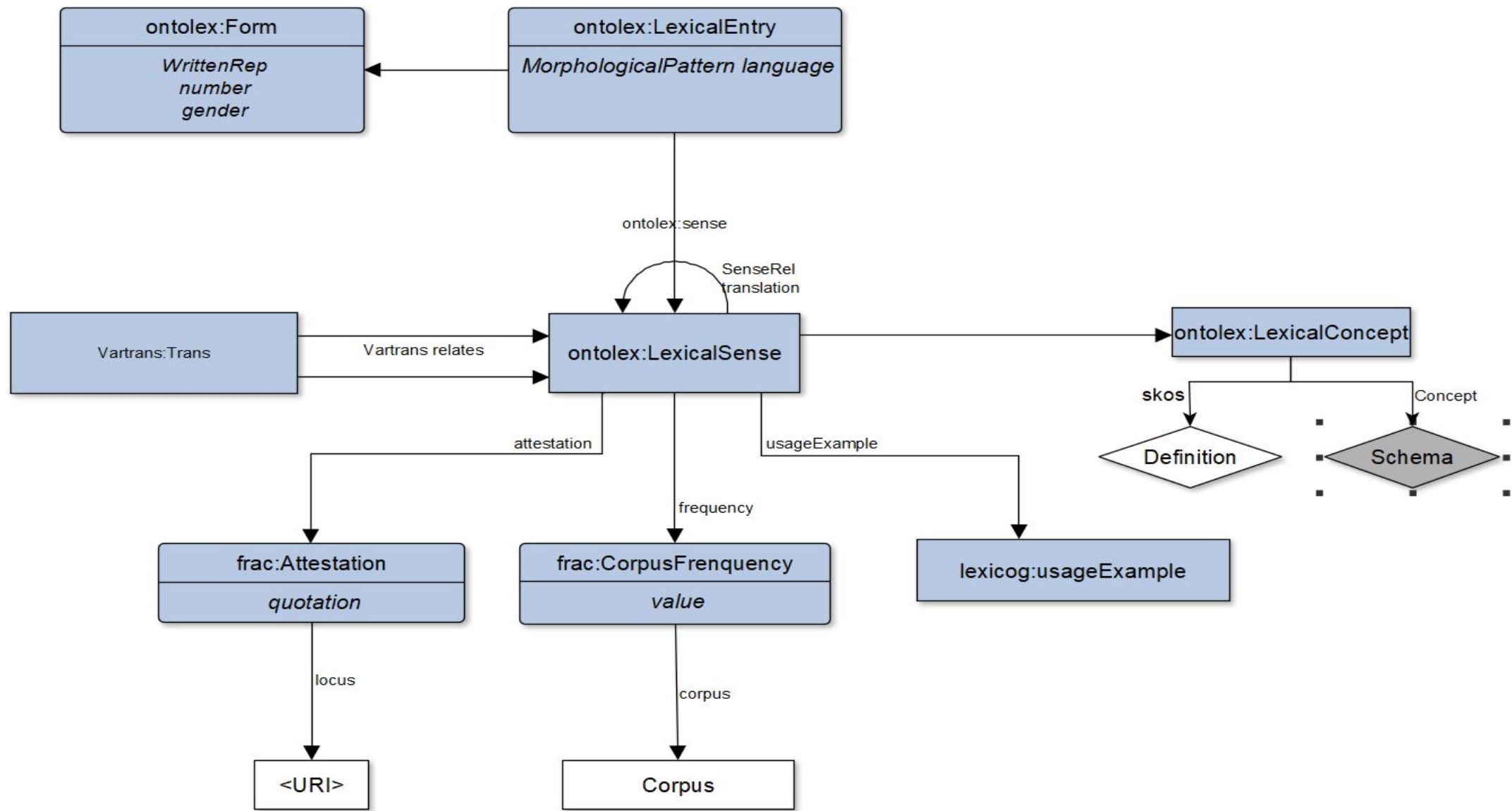


figure1. Ontolex Model Entry Workflow



## Steps

**XML file**  
**TEI-LMF model**



**RDF file**  
**Ontolex model**

- Definition of entry diagram

- Creation of a script for an automatic transformation



```

1 :ontolexLexicalEntry_corbeau-n a ontolex:Lexica 1 <?php
2 ?GENERATE->? ontolex:canonicalForm :ontolexFor 2
3 ontolex:denotes :corbeau_Concept;
4 ontolex:sense :ontolexLexicalSense_corbeau_Se 3 $xml_data=simplexml_load_file('architecture.xml');
5 lime:language "fr"^^xsd:language; 4 $i=1;
6 <http://www.lexinfo.net/ontology/3.0/lexinfo# 5 foreach($xml_data->entry as $entry)
7 <http://www.lexinfo.net/ontology/3.0/lexinfo# 6 {
8 :ontolexForm_a852af2a a ontolex:Form; 7 if(!$entry->sense->xr)
9 <http://www.lexinfo.net/ontology/3.0/lexinfo# 8 continue;
10 <http://www.lexinfo.net/ontology/3.0/lexinfo# 9 echo ":ontolexLexicalEntry_". $entry->sense->xr->ref["target"]." a
11 ontolex:writtenRep "corbeau"@fr; 10 ontolex:LexicalEntry;<br>";
12 <http://www.lexinfo.net/ontology/3.0/lexinfo# 11 echo "ontolex:canonicalForm :ontolexForm_". $i."<br>";
13 :corbeau_Concept a ontolex:LexicalConcept; 12 echo "ontolex:denotes :".preg_replace("/[ '#]/", "_", $entry->sense->xr-
14 rdfs:label "corbeau"@fr, "ménsula"@es; 13 >ref)."_Concept;<br>";
15 ?->? skos:inScheme :conceptScheme_730af9a9; 14 echo "ontolex:sense :ontolexLexicalSense_".preg_replace("/[ '#]/", "_",
16 skos:topConceptOf :conceptScheme_730af9a9; 15 $entry->sense->xr->ref)."_Sense_1;<br>";
17 skos:definition :note_bbb194b6, :note_0ed6338 16 echo "lime:language \"\". $entry->sense->xr["lang"]. "\"^^xsd:language;<br>";
18 :hormigón_pretensado_Concept a ontolex:LexicalC 17 echo "<#\". \"http://www.lexinfo.net/ontology/3.0/lexinfo#partOfSpeech> ";
19 rdfs:label "béton précontraint"@fr, "hormigón 18 echo "<#http://www.lexinfo.net/ontology/3.0/lexinfo#\". $entry->form-
20 skos:inScheme :conceptScheme_730af9a9; 19 >gramGrp->pos."> .<br><br>";
21 skos:topConceptOf :conceptScheme_730af9a9 . 20
22 :ménsula a vartrans:Translation . 21
23 22
24 :ontolexLexicalSense_ménsula_Sense_1 a ontolex: 16
25 ontolex:isSenseOf :ontolexLexicalEntry_ménsul 17
26 ontolex:reference :corbeau_Concept; 18
27 lexicog:usageExample :ménsula-n_sense_ex; 19
28 vartrans:trans :ontolexLexicalSense_corbeau_S 20
29 ontolex:usage "specialized" . 21
30 22
31 :ontolexLexicalEntry_ménsula-n a ontolex:Lexica 20
32 ontolex:canonicalForm :ontolexForm_ménsula; 21
33 lime:language "es"^^xsd:language; 22
34 ontolex:sense :ontolexLexicalSense_ménsula_Se 23
35 ontolex:denotes :corbeau_Concept; 24
36 <http://www.lexinfo.net/ontology/3.0/lexinfo# 25
37 <http://www.lexinfo.net/ontology/3.0/lexinfo#noun> . 26

```

Figure2. script XMLtoRDF transformation



```

<http://www.lexinfo.net/ontology/3.0/lexinfo#gender> <http://www.lexinfo.net/ontology/3.0/lexinfo#number>
<http://www.lexinfo.net/ontology/3.0/lexinfo#gender> <http://www.lexinfo.net/ontology/3.0/lexinfo#number>

:faïence_Concept a ontolex:LexicalConcept;
rdfs:label "faïence"@fr, "alicatado"@es;
skos:inScheme :conceptScheme_730af9a9;
skos:topConceptOf :conceptScheme_730af9a9;
skos:definition :note_bbb194b6, :note_0ed63387, :note_a676d886 .

:ontolexLexicalSense_alicatado_Sense_1 a ontolex:LexicalSense;
ontolex:isSenseOf :ontolexLexicalEntry_alicatado-n;
ontolex:reference :faïence_Concept;
lexicog:usageExample :alicatado-n_sense_ex;
vartrans:trans :ontolexLexicalSense_faïence_Sense_1;
ontolex:usage "specialized" .

:ontolexLexicalEntry_alicatado-n a ontolex:LexicalEntry;
ontolex:canonicalForm :ontolexForm_alicatado;
lime:language "es"^^xsd:language;
ontolex:sense :ontolexLexicalSense_alicatado_Sense_1;
ontolex:denotes :faïence_Concept;
<http://www.lexinfo.net/ontology/3.0/lexinfo#partOfSpeech> <http://www.lexinfo.net/ontology/3.0/lexinfo#number>

:ontolexForm_alicatado a ontolex:Form;
ontolex:writtenRep "alicatado"@es;
<http://www.lexinfo.net/ontology/3.0/lexinfo#gender> <http://www.lexinfo.net/ontology/3.0/lexinfo#number>
<http://www.lexinfo.net/ontology/3.0/lexinfo#gender> <http://www.lexinfo.net/ontology/3.0/lexinfo#number>

:note_bbb194b6 rdf:value "Editions Eyrolles"@fr;
dct:source <https://www.editions-eyrolles.com/Dico-BTP/definition.html?i=1>

:source a vartrans:Translation .
:ontolexLexicalSense_faïence_Sense_1 a ontolex:LexicalSense; ontolex:usage "specialized" .

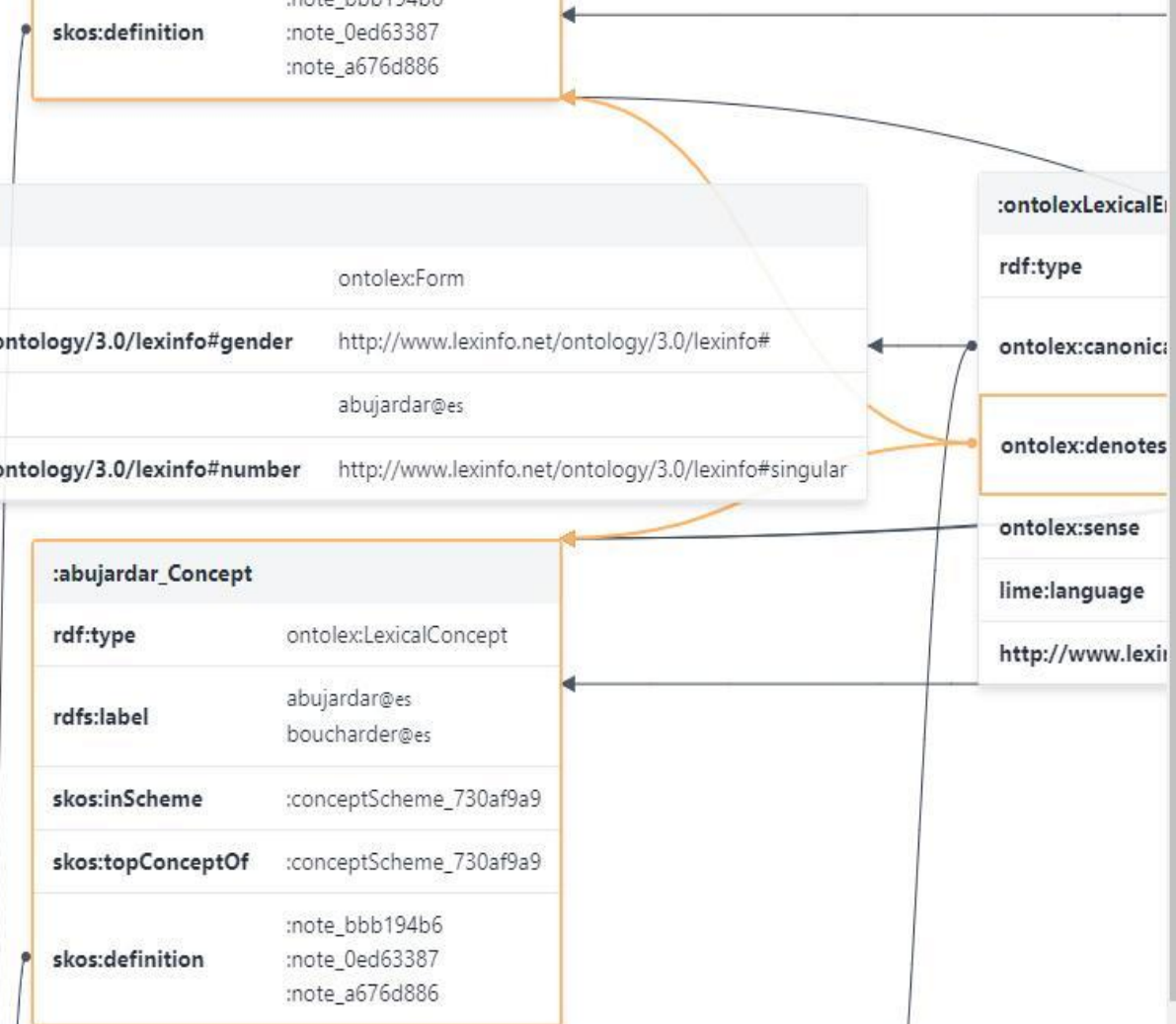
```

:boucharder_Concept	
rdf:type	ontolex:LexicalConcept
rdfs:label	boucharder@fr abujardar@es
skos:inScheme	:conceptScheme_730af9a9
skos:topConceptOf	:conceptScheme_730af9a9
skos:definition	:note_bbb194b6 :note_0ed63387 :note_a676d886

:ontolexForm_abujardar	
rdf:type	ontolex:Form
http://www.lexinfo.net/ontology/3.0/lexinfo#gender	http://www.lexinfo.net/ontology/3.0/lexinfo#number
ontolex:writtenRep	abujardar@es
http://www.lexinfo.net/ontology/3.0/lexinfo#number	http://www.lexinfo.net/ontology/3.0/lexinfo#singular

:abujardar_Concept	
rdf:type	ontolex:LexicalConcept
rdfs:label	abujardar@es boucharder@fr
skos:inScheme	:conceptScheme_730af9a9
skos:topConceptOf	:conceptScheme_730af9a9
skos:definition	:note_bbb194b6 :note_0ed63387 :note_a676d886

:ontolexLexicalEntry_alicatado-n	
rdf:type	ontolex:LexicalEntry
ontolex:canonicalForm	:ontolexForm_alicatado
ontolex:denotes	:faïence_Concept
ontolex:sense	:ontolexLexicalSense_alicatado_Sense_1
lime:language	"es"^^xsd:language
http://www.lexinfo.net/ontology/3.0/lexinfo#partOfSpeech	http://www.lexinfo.net/ontology/3.0/lexinfo#number





## Steps

**XML file**  
**TEI-LMF model**



**RDF file**  
**Ontolex model**

- Definition of entry diagram
- Creation of a script for an automatic transformation
- Import RDF file to VocBench

**Let's see what happens....**

VocBench

DataMetadata ▾SPARQLTools ▾

ClassConceptSchemeCollectionPropertyLexiconLex.Entry

Datatype

A ↺ ⚙

M ▾

ménsula (es)

muro (es)

Search

Q ▴ a.. ⚙

ménsula (es) ×

aislamiento exterior (es), capa de m... ×

aislamiento exterior (es), capa de m... ×

aislamiento exterior (es), batache (e... ×

aislamiento exterior (es), calepinage ... ×

×

ménsula (es)

http://www.Architecture\_Dic/ ménsula-n

Ⓞ Rename A 🔍 ⌚ ↺ ⚙

Types:

rdf:type

⊕ ▾

⦿ ontolex:LexicalEntry ▾

Lexical forms:

ontolex:canonicalForm

⊕ ▾

📄 :ontolexForm\_ménsula ▾

Subterms:

ⓘ ▾

Constituents:

ⓘ ▾

RDFS members:

ⓘ ▾

Lexical senses:

ontolex:sense

⊕ ▾

Status: ⚑

ResView

LexicographerView

Code

v. 10.2.0

© ART Group, 2016

## Conclusions

**A template script could be  
used to adapt any xml  
serialisation**

**Vocbench is a very useful tool  
that also has a pedagogical  
function**